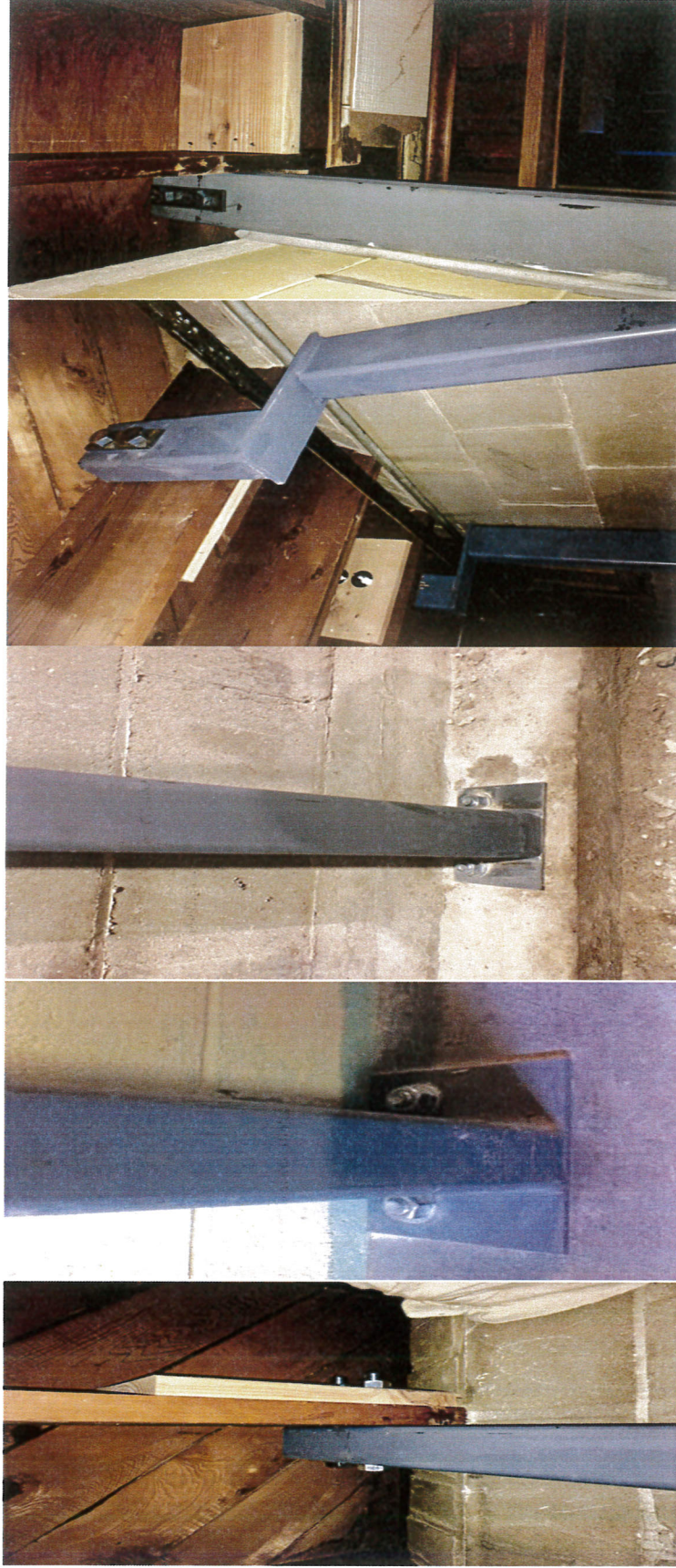




Structural Repair/ Wall Reinforcement with Steel Supports

633 E. Cecelia Dr. Pewaukee, WI 53072 262-691-0402 www.ihncompany.com



Anchored into house joist/ Base anchored through floor/ Base anchored when interior drain tile is done/ Top with offset if obstacles are present/ Top anchored with blocking when joists are parallel - Ihn Company installs 3x5" steel reinforcements unless otherwise specified

What to look for: step cracks, vertical cracks, shear movement, and block movement at the I – beam. Corners plumb?

Just because there is cracking does not always mean there is movement

Always get the walls measured

Amount of displacement: $< 1/2''$ = stabilization

$< 1''$ = straightening and stabilization